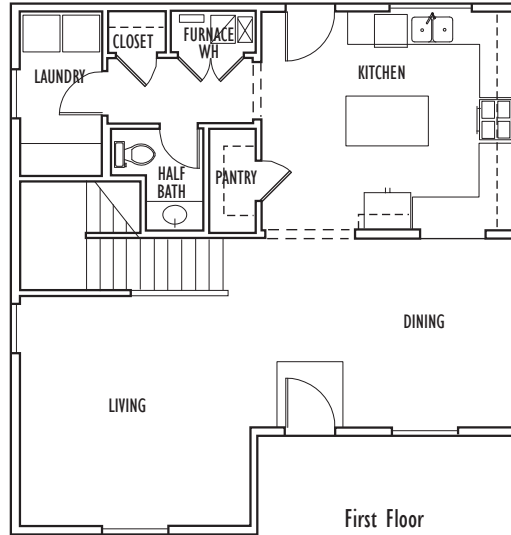


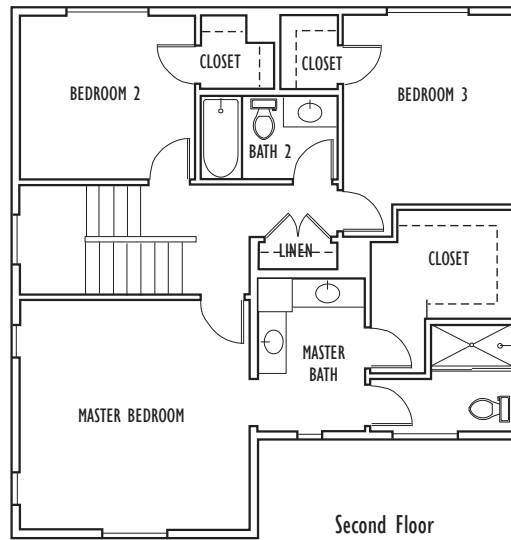
LARKSPUR PLAN 1751 sq ft



Plan I



Plan II



Plan III

One feels instantly welcomed into this beautiful two-story. The large living and dining areas connect conveniently to a great kitchen featuring a spacious walk-in pantry and big center island. A half bath, coat closet, and large laundry room complete the downstairs space. On the second floor, a large master bedroom features private bath and huge walk-in closet. Two more bedrooms, each with walk-in closets, a hall bath, and large linen closet round out this desirable plan.

Designer finishes and touches are evident throughout this beautiful home. The kitchen includes attractive wood cabinetry, granite countertops, and GE® stainless appliances. Two car garage may be attached or detached depending on lot shape and size. This home is located close to schools and has easy freeway access.



Neighbors Building Neighborhoods

Sales Office: (831) 902-9945

Renderings are artist's conceptions; actual homes may vary. Floor plans differ by elevation, Plan I is drawn. Square footage listed is approximate. Builder reserves the right to make changes deemed necessary. CA BRE #01360170 © Nino Homes 2018. All rights reserved.