

PIEDMONT PLAN 2069 sq ft



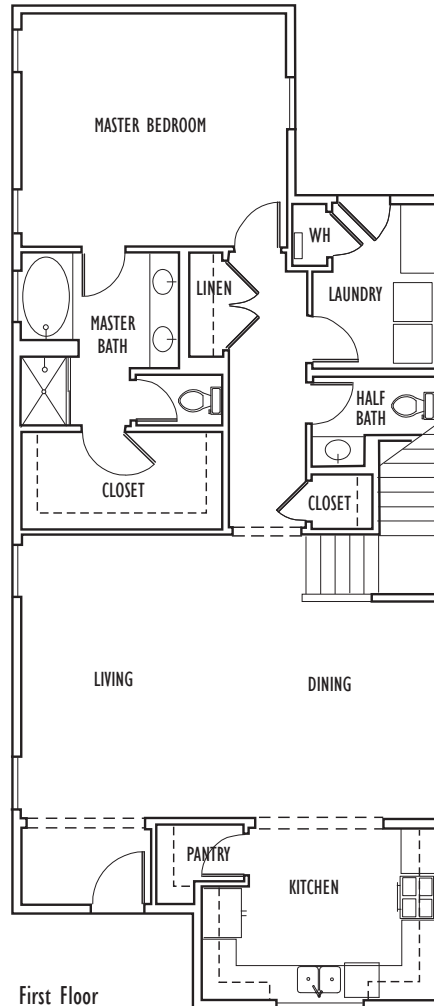
Plan I



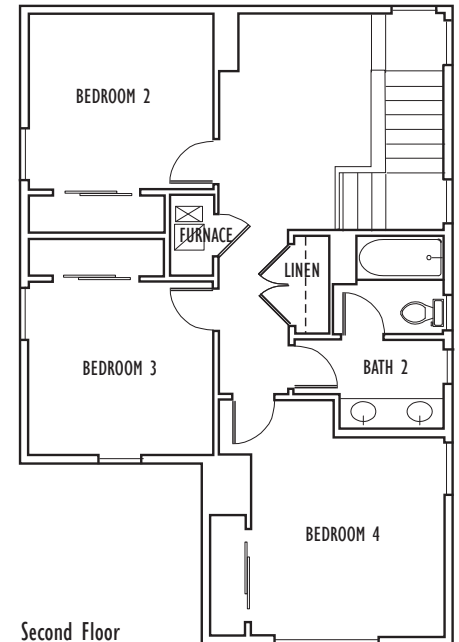
Plan II



Plan III



First Floor



Second Floor

Showcasing great detailing and inviting colors, this impressive two-story home is a winner. Downstairs, a very sought after master suite featuring double vanity, spacious walk-in closet, and separate tub and shower. The sunny kitchen opens conveniently to the great room. A laundry room with folding counter, half bath, and large linen closet are also located downstairs. Upstairs, an additional three bedrooms, full bath, nice open bonus area perfect for play or study area, and large linen closet complete this gorgeous home.

Designer finishes and touches are evident throughout this beautiful home. The kitchen includes attractive wood cabinetry, granite countertops, and GE® stainless appliances. Two car garage may be attached or detached depending on lot shape and size. This home is located close to schools and has easy freeway access.



Neighbors Building Neighborhoods

Sales Office: (831) 902-9945

Renderings are artist's conceptions; actual homes may vary. Floor plans differ by elevation, Plan I is drawn. Square footage listed is approximate. Builder reserves the right to make changes deemed necessary. CA BRE #01360170 © Nino Homes 2018. All rights reserved.