

Arlington

2303 SQ FT 5 BEDROOMS 3 BATHROOMS 2-CAR GARAGE



Arlington I

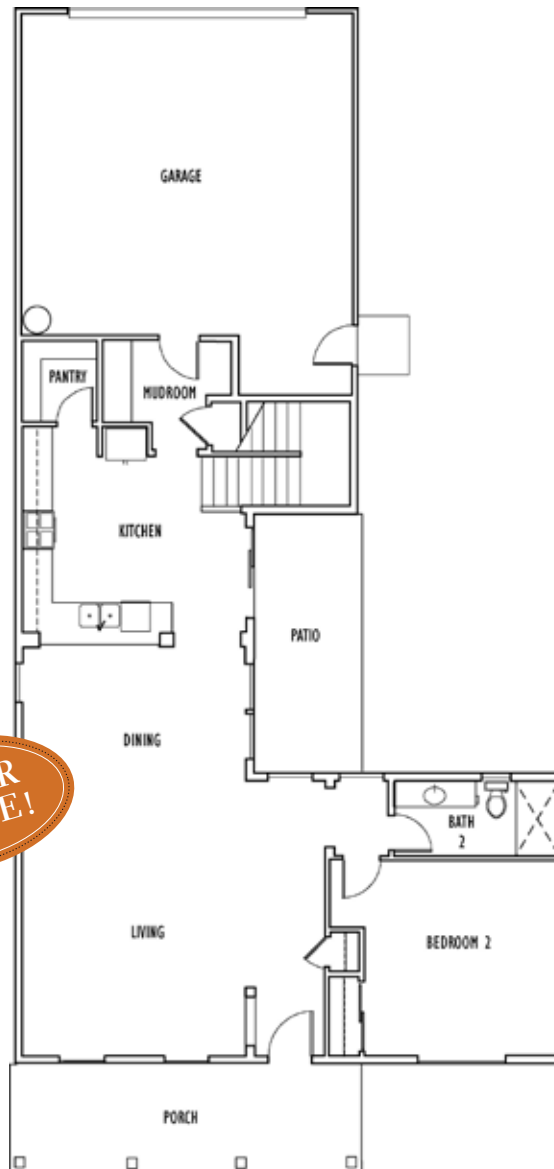


Arlington II

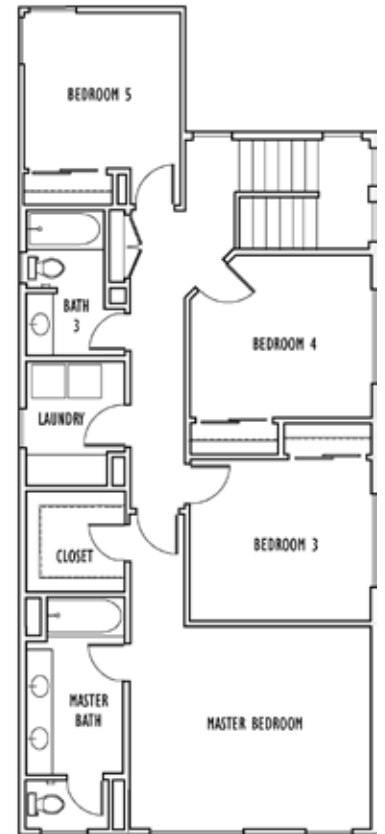
This beautiful, two-story home is stunning whether the ranch-style look with covered porch, corbels and shutters, or the Craftsman-style with pretty front porch and rail. Covered patio located off the kitchen and dining areas. This great floor plan features two master suites—one downstairs and a second one upstairs featuring a double vanity and large walk-in closet. The large kitchen includes ample cabinetry and walk-in pantry. Upstairs, an additional three bedrooms, hall bath, and large laundry room with folding counter complete this great plan.

Designer finishes and touches are evident throughout this beautiful home. The kitchen includes attractive wood cabinetry, granite countertops, and GE stainless appliances. An attached 2-car garage offers ample parking and convenient alley access. This home is located close to schools and has easy freeway access.

SOLAR HOME!



First Floor



Second Floor



NINO HOMES

WWW.NINOHOMES.COM

Neighbors Building Neighborhoods

831.902.9945

CA BRE #01360170

©Nino Homes 2022. All rights reserved.

Renderings are artist's conceptions. Actual homes may vary.
Floor plans may vary by elevation. Square footage listed is approximate.
Builder reserves the right to make any changes deemed necessary.