

Newport

1,666 - 1716 SQ FT 4 BEDROOMS 2 BATHROOMS DETACHED GARAGE



Newport I

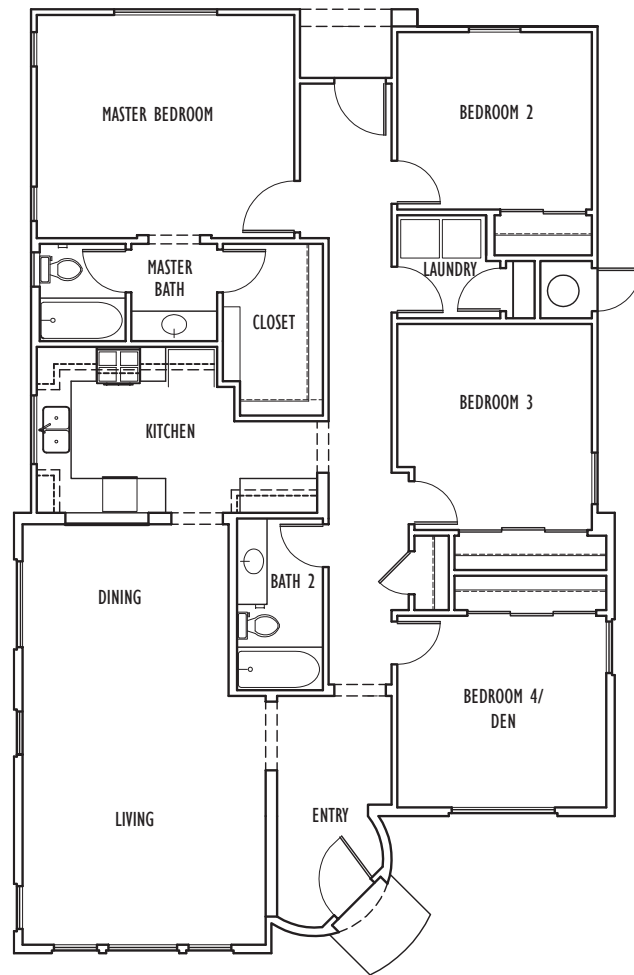


Newport II

This appealing, single-story home intrigues with its stunning colors, and dramatic rooflines. The quaint foyer leads to a large, sunny dining and living area with adjacent kitchen. Cozy and private master suite features its own bath and large walk-in closet. Three more bedrooms, a full hall bath, and a laundry room with linen closet round out this beauty.

Designer finishes and touches are evident throughout this beautiful home. The kitchen includes attractive wood cabinetry, granite countertops, and GE stainless appliances. A 2-car garage offers ample parking and convenient alley access. This home is located close to schools and has easy freeway access.

SOLAR HOME!



NINO HOMES
WWW.NINOHOMES.COM

Neighbors Building Neighborhoods

831.902.9945

CA BRE #01360170

©Nino Homes 2022. All rights reserved.

Floor plan shown is for Newport I.

Renderings are artist's conceptions. Actual homes may vary.

Floor plans may vary by elevation. Square footage listed is approximate.

Builder reserves the right to make any changes deemed necessary.

**Floorplan shown is Newport I
Newport II does not have a circular entry.*