

Savannah

2578 - 2585 SQ FT

5 BEDROOMS

3 BATHROOMS

DETACHED GARAGE



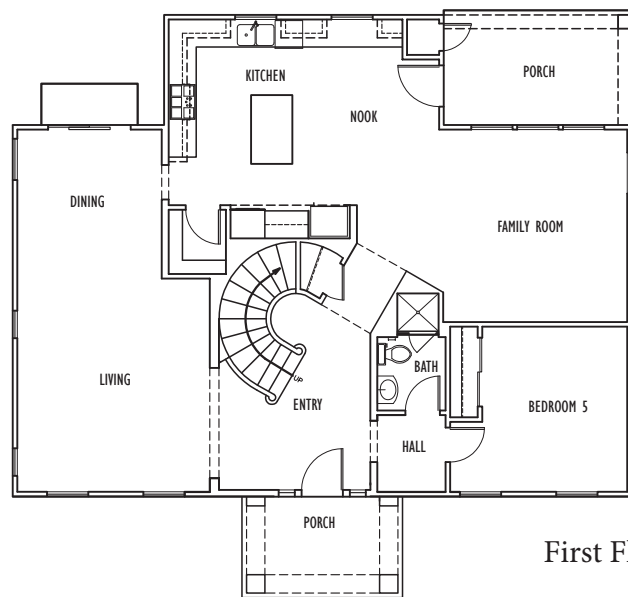
Savannah I



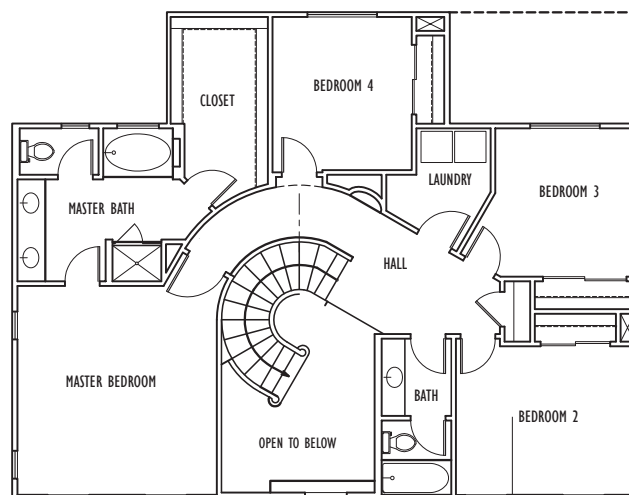
Savannah II

This stately two-story is a showstopper. Upon entry, the elegant home features a dramatic foyer with circular staircase. Downstairs, the large kitchen with island opens to the eating area and sunny family room. A separate, more formal dining and living room are located nearby. The downstairs bedroom with full bath makes a great home office or guest suite. Upstairs, the large master suite with double vanity bath and huge walk-in closet are located off the stunning curved hallway. An additional three bedrooms, full bath, laundry room and linen complete this gorgeous living space.

Designer finishes and touches are evident throughout this beautiful home. The kitchen includes attractive wood cabinetry, granite countertops, and GE stainless appliances. A 2-car garage offers ample parking and convenient alley access. This home is located close to schools and has easy freeway access.



First Floor



Second Floor



NINO HOMES

WWW.NINOHOMES.COM

Neighbors Building Neighborhoods

831.902.9945

CA BRE #01360170

©Nino Homes 2022. All rights reserved.

Renderings are artist's conceptions. Actual homes may vary.
Floor plans may vary by elevation. Square footage listed is approximate.
Builder reserves the right to make any changes deemed necessary.