

Stratford

1942 SQ FT 4 BEDROOMS 2.5 BATHROOMS DETACHED GARAGE



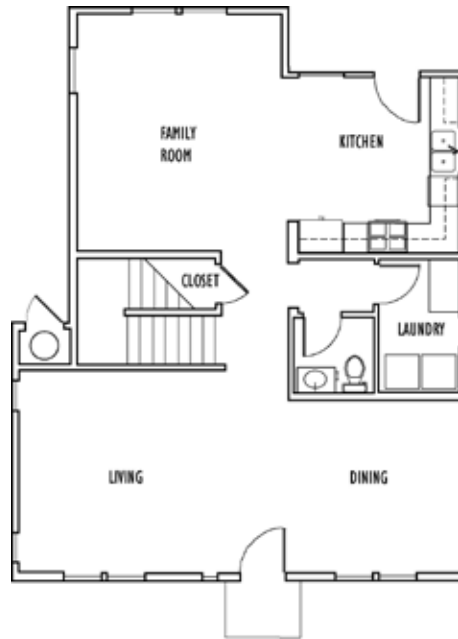
Stratford I



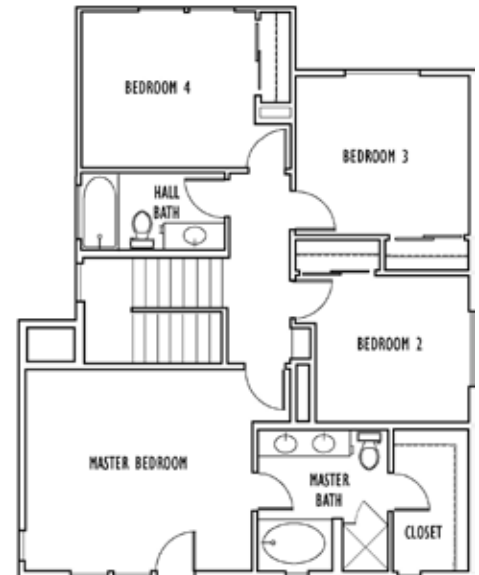
Stratford II

This two-story is charming as can be, whether choosing the Monterey or Colonial-styled exterior. You have great gathering options as a result of the kitchen/family room area being separate from the living/dining room space. The laundry room with folding counter and half bath complete the downstairs. On the second floor, the master suite includes a double vanity, separate tub and shower, and large walk-in closet. An additional three bedrooms, full bath and linen complete this space.

Designer finishes and touches are evident throughout this beautiful home. The kitchen includes attractive wood cabinetry, granite countertops, and GE stainless appliances. A 2-car garage offers ample parking and convenient alley access. This home is located close to schools and has easy freeway access.



First Floor



Second Floor



 **NINO HOMES**
WWW.NINOHOMES.COM

Neighbors Building Neighborhoods

831.902.9945

CA BRE #01360170

©Nino Homes 2022. All rights reserved.

Floor plan shown is for Stratford I.

Renderings are artist's conceptions. Actual homes may vary.

Floor plans may vary by elevation. Square footage listed is approximate.

Builder reserves the right to make any changes deemed necessary.