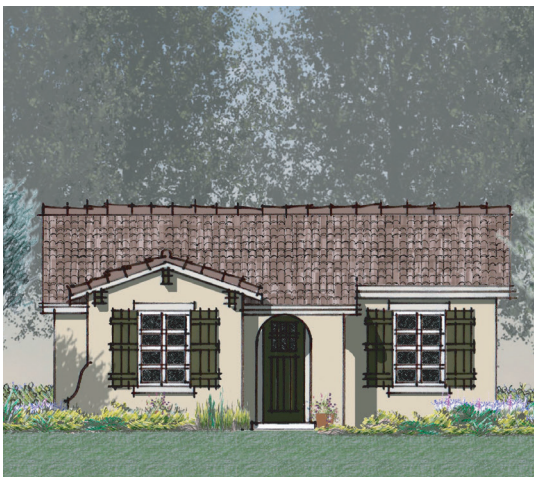


PETALUMA PLAN 1550 sq ft



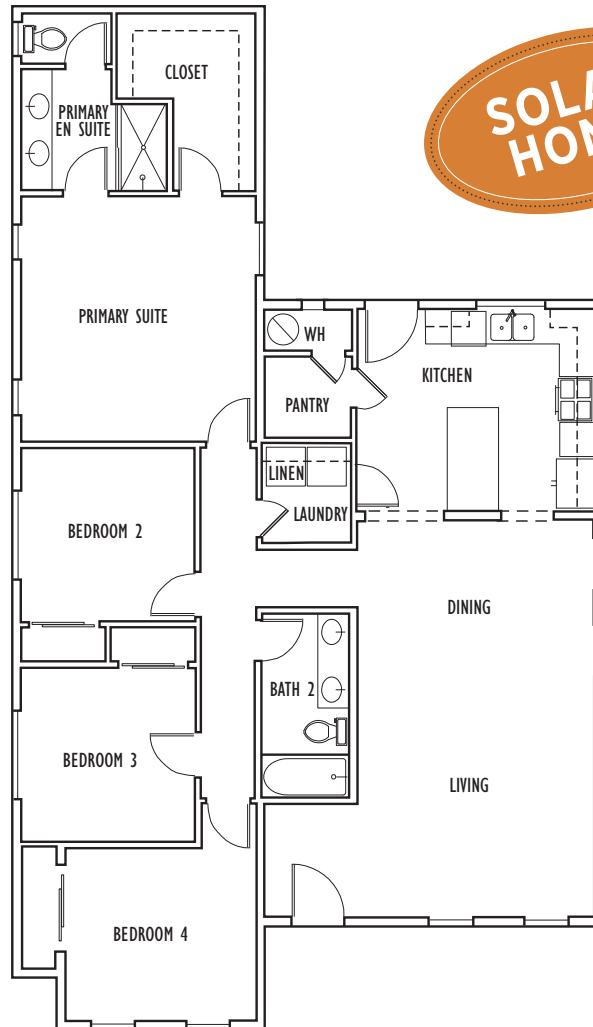
Plan I



Plan II



Plan III



A delightful, one-story home—offering charming curb appeal and warmth. A sunny, vaulted great room opens through a set of arches to the kitchen, which features a spacious walk-in pantry and large center island. Master suite includes its own full bath and oversized walk-in closet. Three additional bedrooms, convenient hall bath, a laundry room, and nice linen closet complete this very efficient plan.

Designer finishes and touches are evident throughout this beautiful home. The kitchen includes attractive wood cabinetry, granite countertops, and GE® stainless appliances. Two car garage may be attached or detached depending on lot shape and size. This home is located close to schools and has easy freeway access.

All homes are equipped with solar panels. System can be leased or purchased by the homeowner. Pricing listed does not include the cost of leasing or purchasing the Solar - prices vary by plan. See Salesperson to review the specifics per home.

Renderings are artist's conceptions; actual homes may vary. Floor plans differ by elevation, Plan I is drawn. Square footage listed is approximate. Builder reserves the right to make changes deemed necessary CA BRE #01360170 © Nino Homes 2024. All rights reserved.



Neighbors Building Neighborhoods

Sales Office: (831) 902-9945