

# PIEDMONT PLAN 2069 sq ft



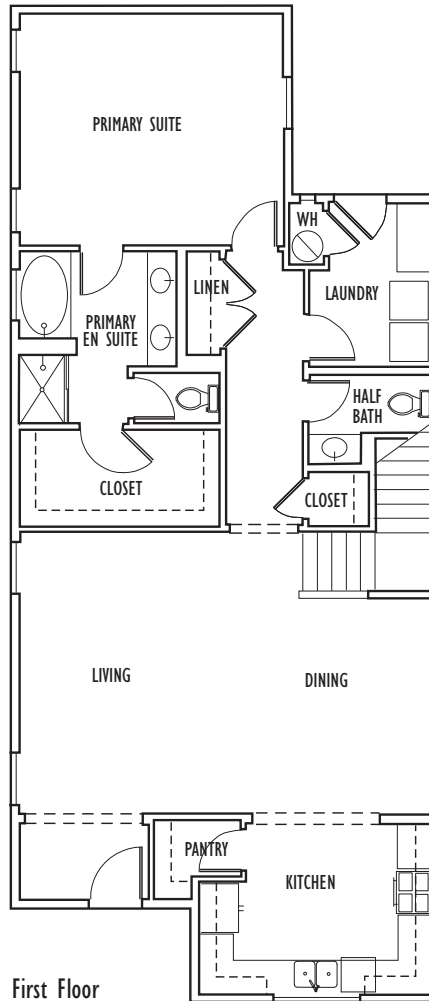
Plan I



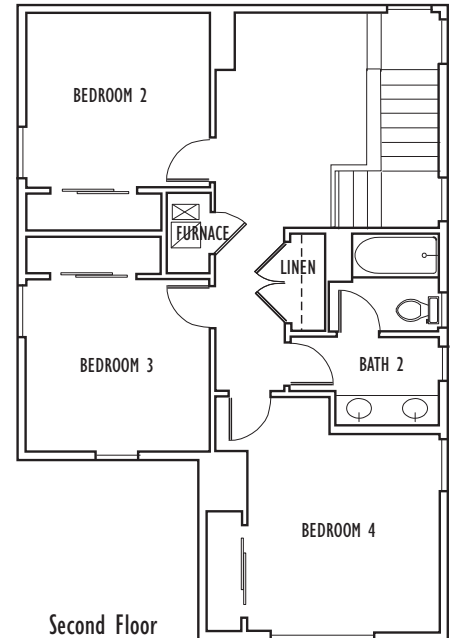
Plan II



Plan III



First Floor



Second Floor

**SOLAR  
HOME**

**Showcasing great detailing** and inviting colors, this impressive two-story home is a winner. Downstairs, a very sought after master suite featuring double vanity, spacious walk-in closet, and separate tub and shower. The sunny kitchen opens conveniently to the great room. A laundry room with folding counter, half bath, and large linen closet are also located downstairs. Upstairs, an additional three bedrooms, full bath, nice open bonus area perfect for play or study area, and large linen closet complete this gorgeous home.

Designer finishes and touches are evident throughout this beautiful home. The kitchen includes attractive wood cabinetry, granite countertops, and GE® stainless appliances. Two car garage may be attached or detached depending on lot shape and size. This home is located close to schools and has easy freeway access.

All homes are equipped with solar panels. System can be leased or purchased by the homeowner. Pricing listed does not include the cost of leasing or purchasing the Solar - prices vary by plan. See Salesperson to review the specifics per home.

Renderings are artist's conceptions; actual homes may vary. Floor plans differ by elevation, Plan I is drawn. Square footage listed is approximate. Builder reserves the right to make changes deemed necessary. CA BRE #01360170 © Nino Homes 2024. All rights reserved.



**NINO HOMES**  
WWW.NINOHOMES.COM

*Neighbors Building Neighborhoods*

**Sales Office: (831) 902-9945**