

ROSEVILLE PLAN 1844 sq ft



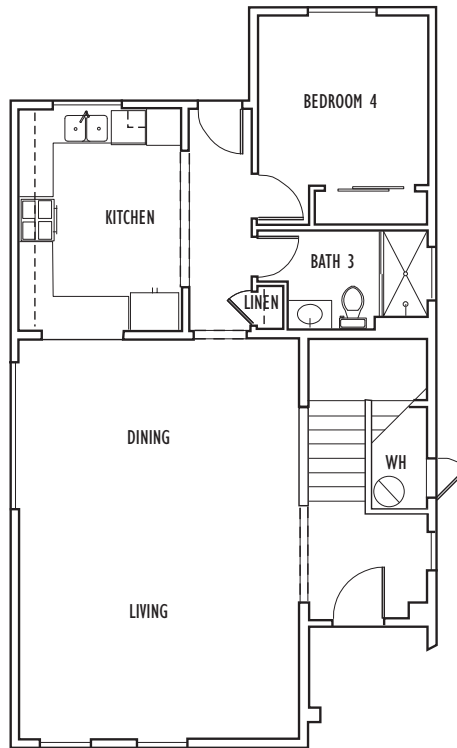
Plan I



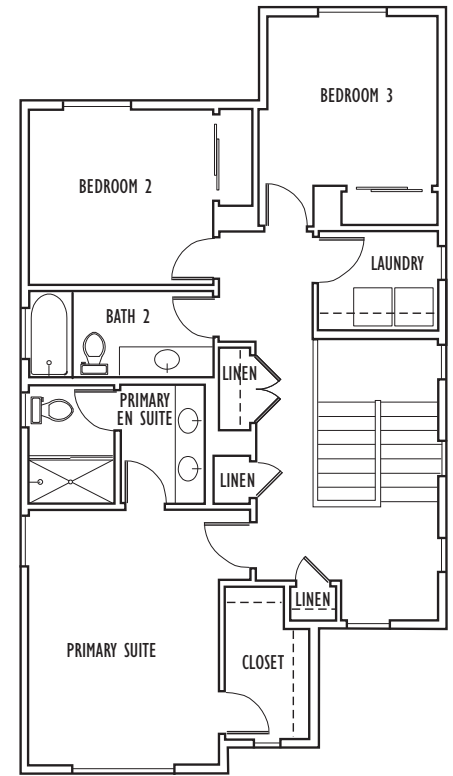
Plan II



Plan III



First Floor



Second Floor



Ideal for a mother-in-laws or home office, this attractive two story plan offers a desirable downstairs bedroom. The kitchen interacts nicely with the open living space up front. In addition to the master suite with private bath and large walk-in closet upstairs, another two bedrooms, hall bath, conveniently located laundry room and large linen complete this great living space.

Designer finishes and touches are evident throughout this beautiful home. The kitchen includes attractive wood cabinetry, granite countertops, and GE® stainless appliances. Two car garage may be attached or detached depending on lot shape and size. This home is located close to schools and has easy freeway access.

All homes are equipped with solar panels. System can be leased or purchased by the homeowner. Pricing listed does not include the cost of leasing or purchasing the Solar - prices vary by plan. See Salesperson to review the specifics per home.

Renderings are artist's conceptions; actual homes may vary. Floor plans differ by elevation, Plan I is drawn. Square footage listed is approximate. Builder reserves the right to make changes deemed necessary. CA BRE #01360170 © Nino Homes 2024. All rights reserved.



Neighbors Building Neighborhoods

Sales Office: (831) 902-9945