

TIBURON PLAN 2276 sq ft



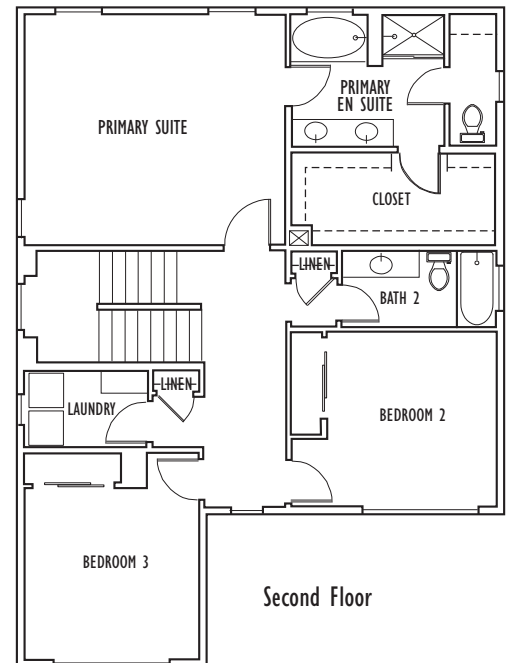
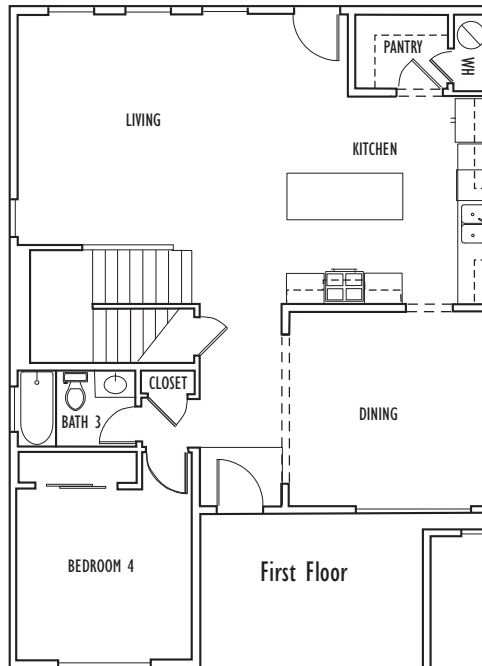
Plan I



Plan II



Plan III



This large 4 Bedroom, 3 Bath is a stunner no matter which front exterior. The downstairs features an open living room and kitchen with large island, a beautiful separate dining room, and the much desired downstairs bedroom with full bath. The upstairs master features a separate tub and shower, double vanity and huge walk-in closet. Also on the second floor— two more bedrooms, two hall closets, a full bath, and a large laundry room with folding counter.

Designer finishes and touches are evident throughout this beautiful home. The kitchen includes attractive wood cabinetry, granite countertops, and GE® stainless appliances. Two car garage may be attached or detached depending on lot shape and size. This home is located close to schools and has easy freeway access.

All homes are equipped with solar panels. System can be leased or purchased by the homeowner. Pricing listed does not include the cost of leasing or purchasing the Solar - prices vary by plan. See Salesperson to review the specifics per home.

Renderings are artist's conceptions; actual homes may vary. Floor plans differ by elevation, Plan I is drawn. Square footage listed is approximate. Builder reserves the right to make changes deemed necessary. CA BRE #01360170 © Nino Homes 2024. All rights reserved.



Neighbors Building Neighborhoods

Sales Office: (831) 902-9945